

CHARMILL

RESIDENTIAL



Loudoun Road, St John's Wood NW8

A charming four/five bedroom terraced house set over three floors situated on Loudoun Road. This bright and spacious 1874 sq ft property comprises two reception room (one can be used as a fifth bedroom/study), a separate fully fitted kitchen/dining room, access to a rear patio, a front garden, three double bedrooms, one single bedroom, two bathrooms (one en-suite), a separate guest cloakroom and a balcony. Further benefits include wooden flooring throughout and ample storage. The house is located on Loudoun Road close to Swiss Cottage and St John's Wood Underground station both of which are on the Jubilee line. St John's Wood is a well established residential area with a wonderful array of shops, restaurants and transport facilities providing easy access to central London.

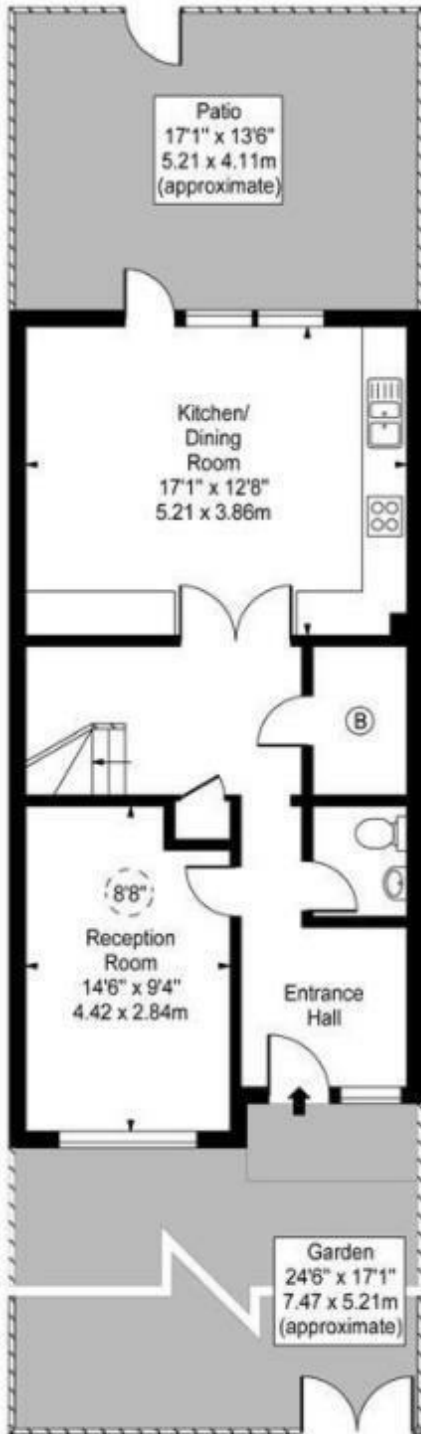
- Four bedrooms
- Two reception rooms
- Kitchen/dining room
- Two bathrooms
- Separate guest cloakroom
- Front patio
- Rear garden
- Balcony

£2,307

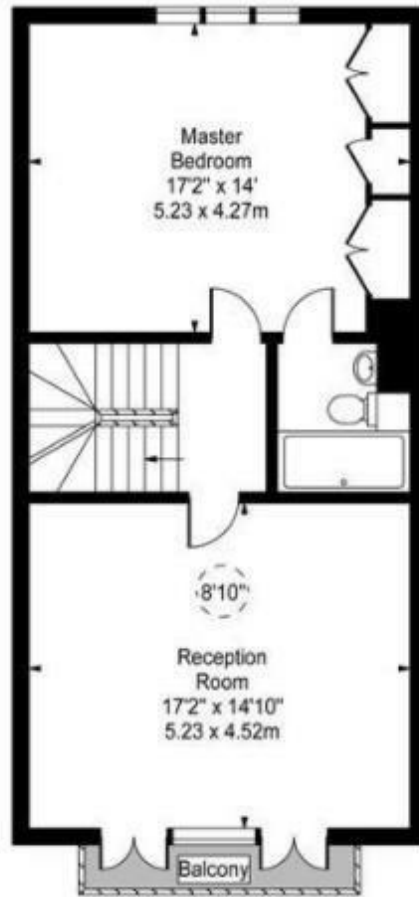
Loudoun Road, NW8



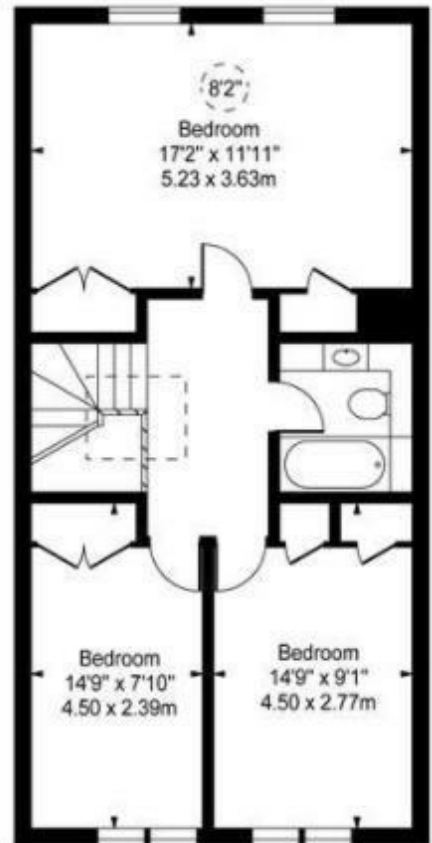
- Ceiling Height



Ground Floor



First Floor



Second Floor

Approx Gross Internal Area 1874 Sq Ft - 174.09 Sq M

Energy Efficiency Rating		Current	Potential
Very energy efficient - lower running costs			
(92 plus) A			85
(81-91) B			
(69-80) C			
(55-68) D		68	
(39-54) E			
(21-38) F			
(1-20) G			
Not energy efficient - higher running costs			
England & Wales		EU Directive 2002/91/EC.	

Environmental Impact (CO ₂) Rating	
Current	Potential
Very environmentally friendly - lower CO ₂ emissions	
(92 plus) A	
(81-91) B	
(69-80) C	
(55-68) D	
(39-54) E	
(21-38) F	
(1-20) G	
Not environmentally friendly - higher CO ₂ emissions	
England & Wales	
EU Directive 2002/91/EC	

